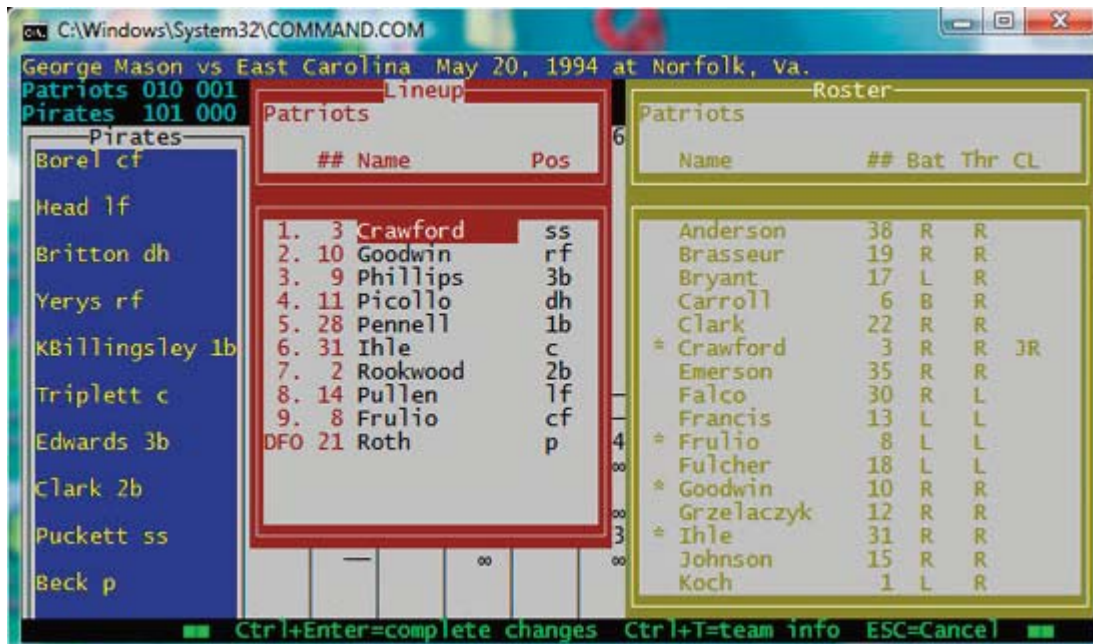


Game Setup

Handle various venue rules for number of batters, number of innings, DH rule.

Describe weather.

Choose to chart pitches from pitcher's or batter's view.



Rosters/Lineups

Key in starting lineups.

Make subs by keying in uni number or name.

Key in PR for pinch runner, PH for pinch hitter.

"*" indicates players currently in game.



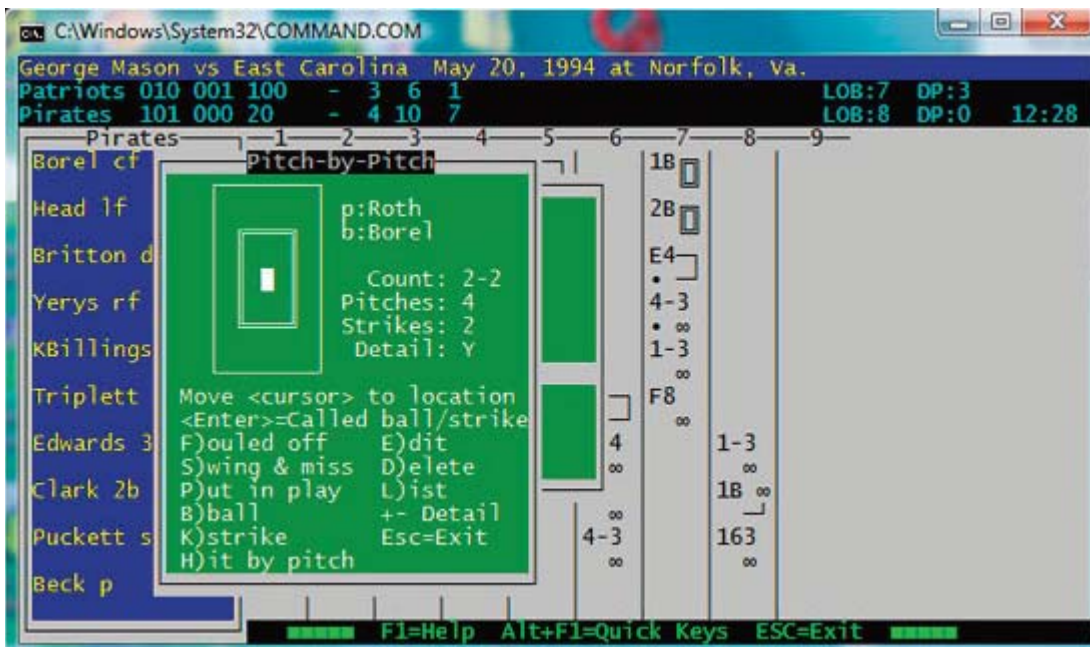
In-game entry

Key in plays just like a scorebook.

Diamond graphic displays current action.

Make subs in game.

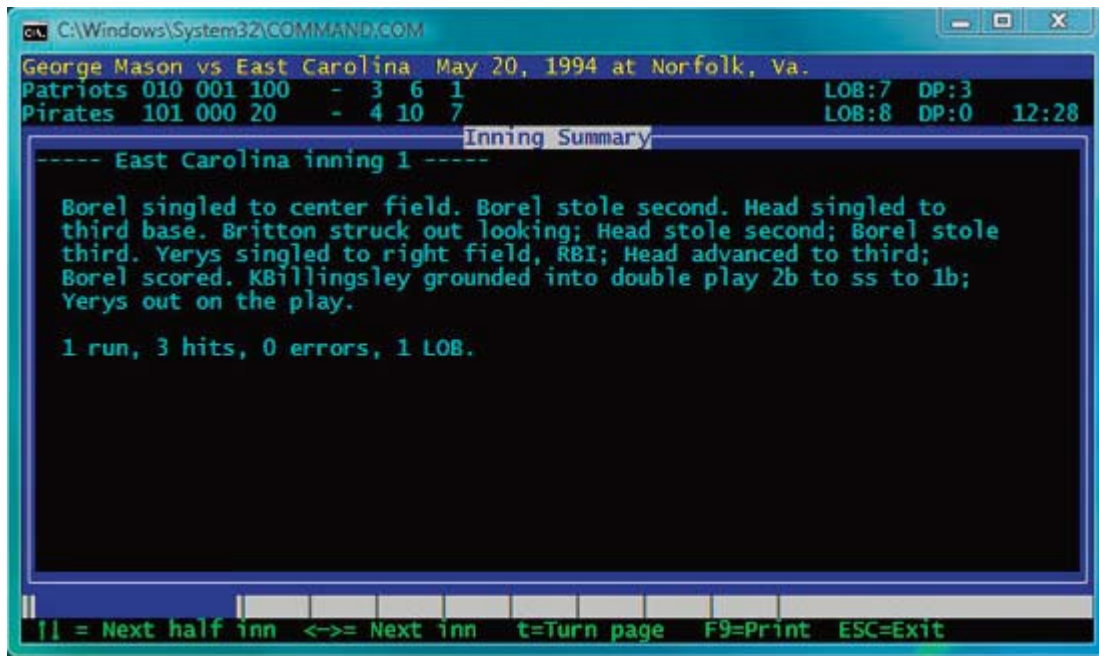
Load season stats to display in boxscore.



Pitch chart

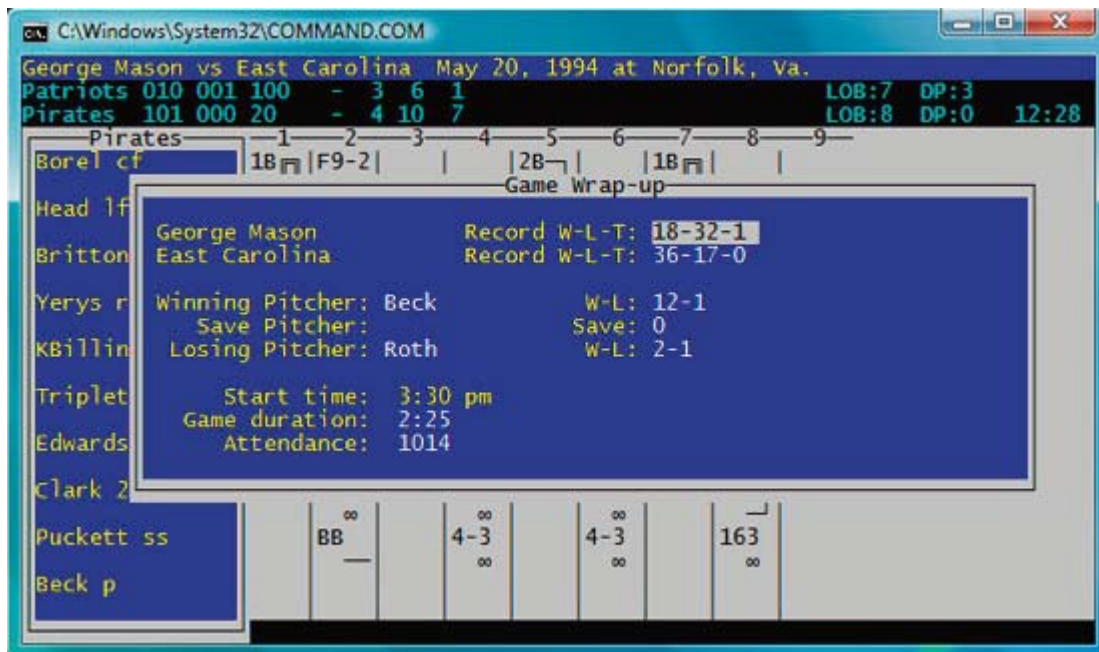
Track number, type, location of pitches.

Pitch count and totals can display in play-by-play, live stats, box score.



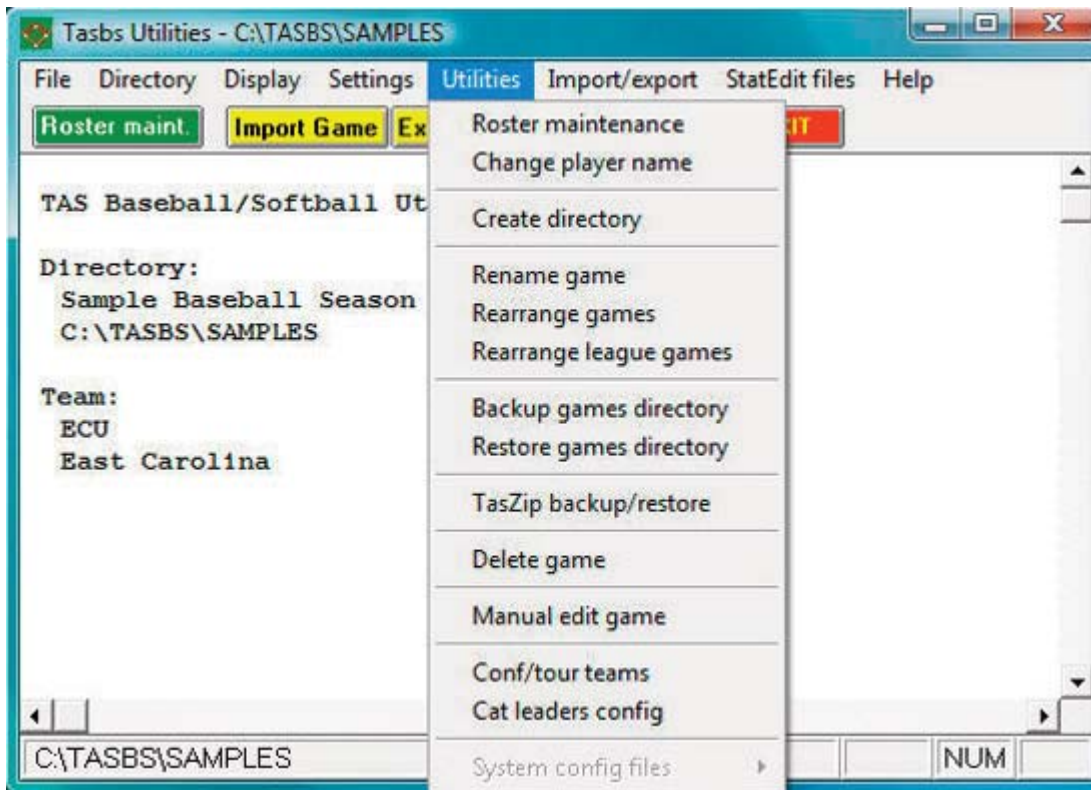
Play-by-Play

Review various stats during input, including inning summary, substitutions, defensive positions, and boxscore stats.



Wrap-up game

Input winning and losing pitchers, records, attendance, etc., in order to complete the in-game scoring process.



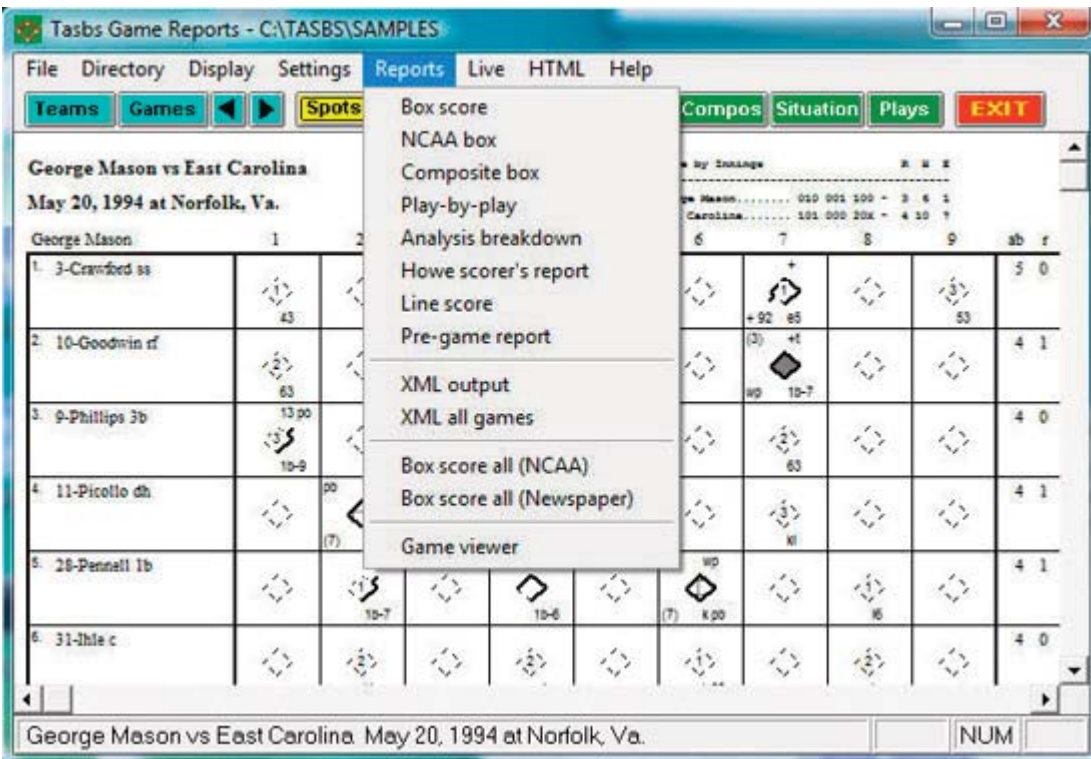
Utilities

Set up directories for baseball and softball teams.

Import/export games and rosters.

Make changes to rosters.

“Capture” season stats for conference office reporting, or for use in game reports and stats display.



Game Reports

Print scoresheet, various reports.

Options to include inherited runners, pitch chart information, pitch sequence, or to use “dp” instead of “dh”.

Generate reports with tabs stops and/or using ‘style’ options.

Generate XML output of one or all games.

Generate HTML and play-by-plays.

Season Reports

Baseball or softball venue.

Show/flag/hide inactive players.

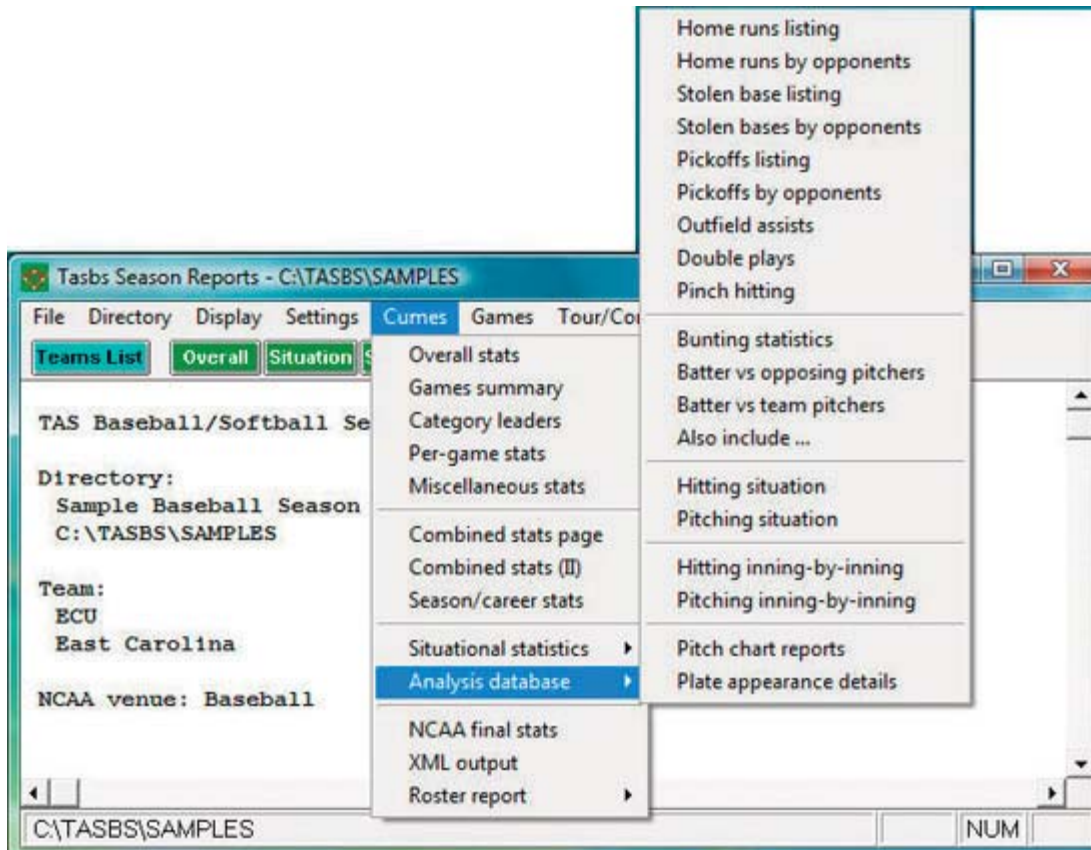
XML report for NCAA reporting.

Generate HTML files for season stats.

Generate tournament or conference stats and superlatives.

Analysis database and situational statistics.

Generate reports with tabs stops and/or using 'style' options.



Career Reports

Separate baseball and softball directories.

Manually enter previous season totals and records or "capture" from past season files.

Edit season data for individuals and teams.

Generate reports with tabs stops and/or using 'style' options.

